

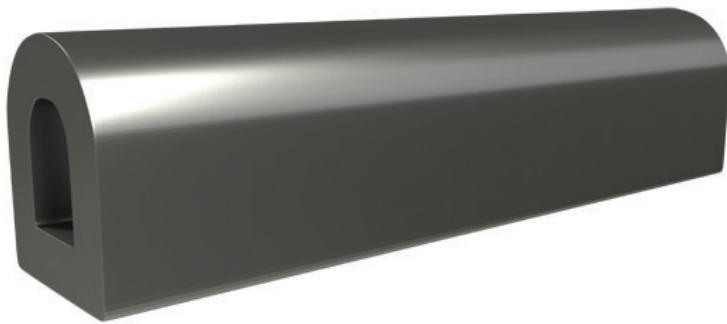


# PACIFIC MARINE & INDUSTRIAL

## MANUFACTURING $\diamond$ DISTRIBUTION $\diamond$ SERVICE

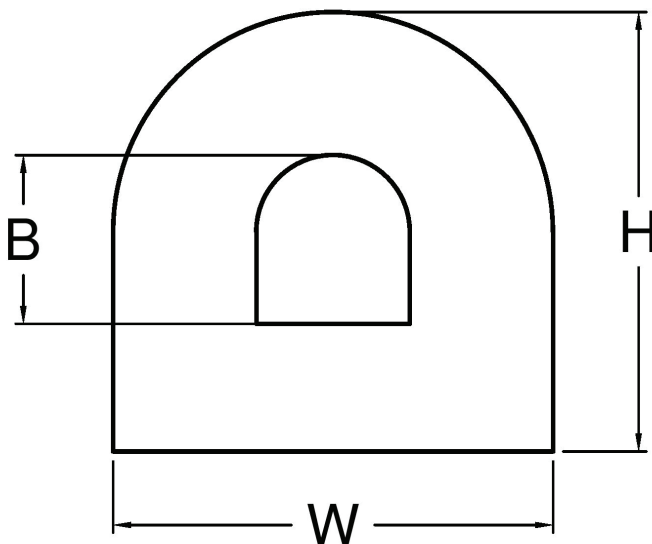
### EXTRUDED RUBBER FENDERS

### DD SERIES - D SHAPE WITH D BORE



#### FENDER FEATURES

- ✦ Cross Section Sizes Per Chart Below
- ✦ Cut To Length as Desired
- ✦ Maximum Length: 20 Feet in Most Cases
- ✦ Pre Drilled Mounting Holes if Desired
- ✦ Pre Curved to Match Radius if Desired
- ✦ High Quality Black or Non Marking Grey EPDM
- ✦ Standard Hardness of 75 Durometer
- ✦ Custom Materials and Cross Sections Available



Part Number	Width W	Height H	Bore B
DD-2-2-11	2	2	1 x 1
DD-4-4-22	4	4	2 x 2
DD-6-6-33	6	6	3 x 3
DD-8-8-44	8	8	4 x 4
DD-10-10-55	10	10	5 x 5
DD-12-12-66	12	12	6 x 6
DD-14-14-77	14	14	7 x 7
DD-16-16-88	16	16	8 x 8
DD-18-18-99	18	18	9 x 9
DD-20-20-1010	20	20	10 x 10

All Measurements in Inches

Quality Pacific Manufacturing, Inc., P.O. Box 70520 Richmond, CA, USA 94807

☎ 510-233-2310

🌐 [www.pacificmarine.net](http://www.pacificmarine.net)

✉ [info@pacificmarine.net](mailto:info@pacificmarine.net)