



PACIFIC MARINE & INDUSTRIAL

MANUFACTURING ◊ DISTRIBUTION ◊ SERVICE

P3490 - AIRCRAFT SECURING POINT

CUT SHEET



Part: P3490

Aircraft Tie Down
For Concrete Installation

Capacity Estimate**:

9,000 lbs.

**Actual capacity depends on many local installation factors:

- Concrete strength
- Rebar strength (if used) and design
- Angle of pull from the fitting to the load

Material:

Ductile Cast Iron ASTM A-536

Dimensions:

Overall Height:	Bottom Stake Holes:	Rebar Holes On Sides:
3 1/2 Inch (88.9mm)	7/8 x 7/8 Inch (22.2mm)	5/8 Inch (15.9mm)

Installation Tips on Next Page



Quality Pacific Manufacturing, Inc., P.O. Box 70520 Richmond, CA, USA 94807

☎ 510-233-2310

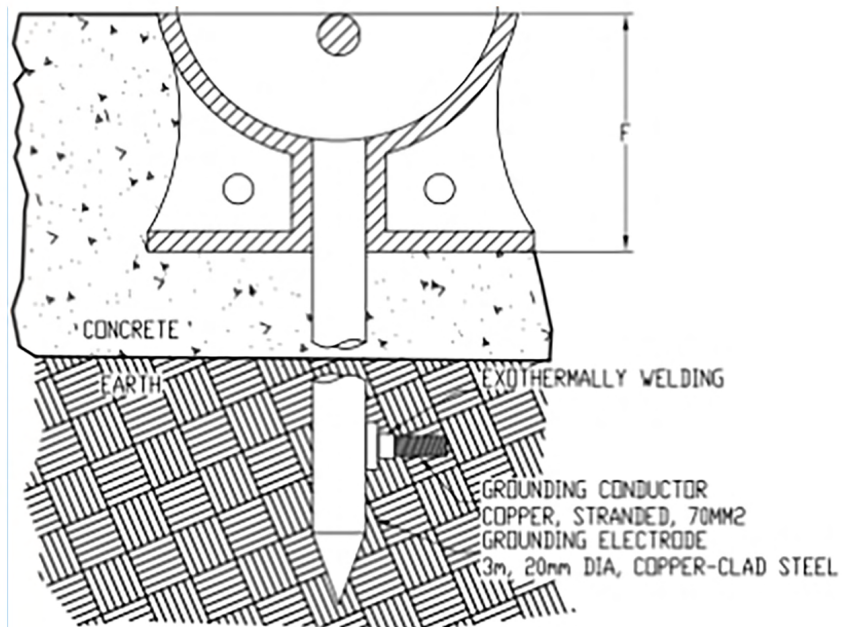
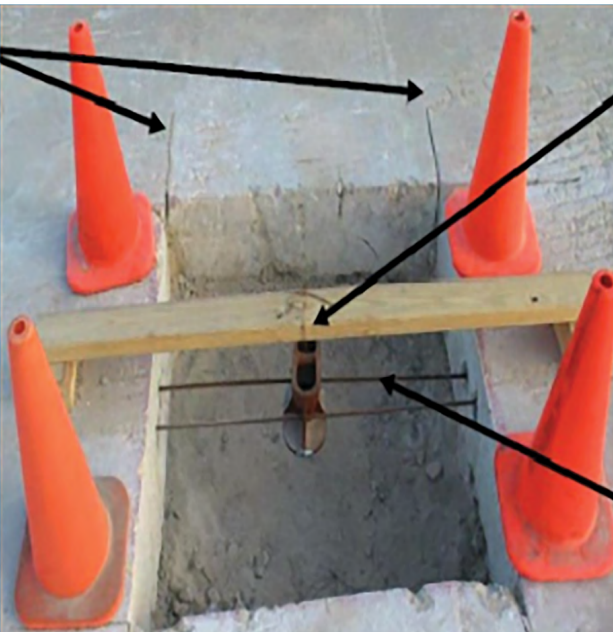
🌐 www.pacificmarine.net

✉ info@pacificmarine.net

Copyright © Quality Pacific Manufacturing, Inc.

Installation Tips

Fill mooring point with sand to keep concrete out during pour. 6,000 psi concrete is recommended. Side rebar holes can be utilized per the direction of the project engineer. Bottom square hole can be used with a stake to bring the mooring point to grade or it can be used to install a grounding rod. It is square to keep the mooring point from displacing during the pour. The mooring point can also be pressed in after the pour.



PACIFIC MARINE & INDUSTRIAL

510-233-2310

www.pacificmarine.net

info@pacificmarine.net