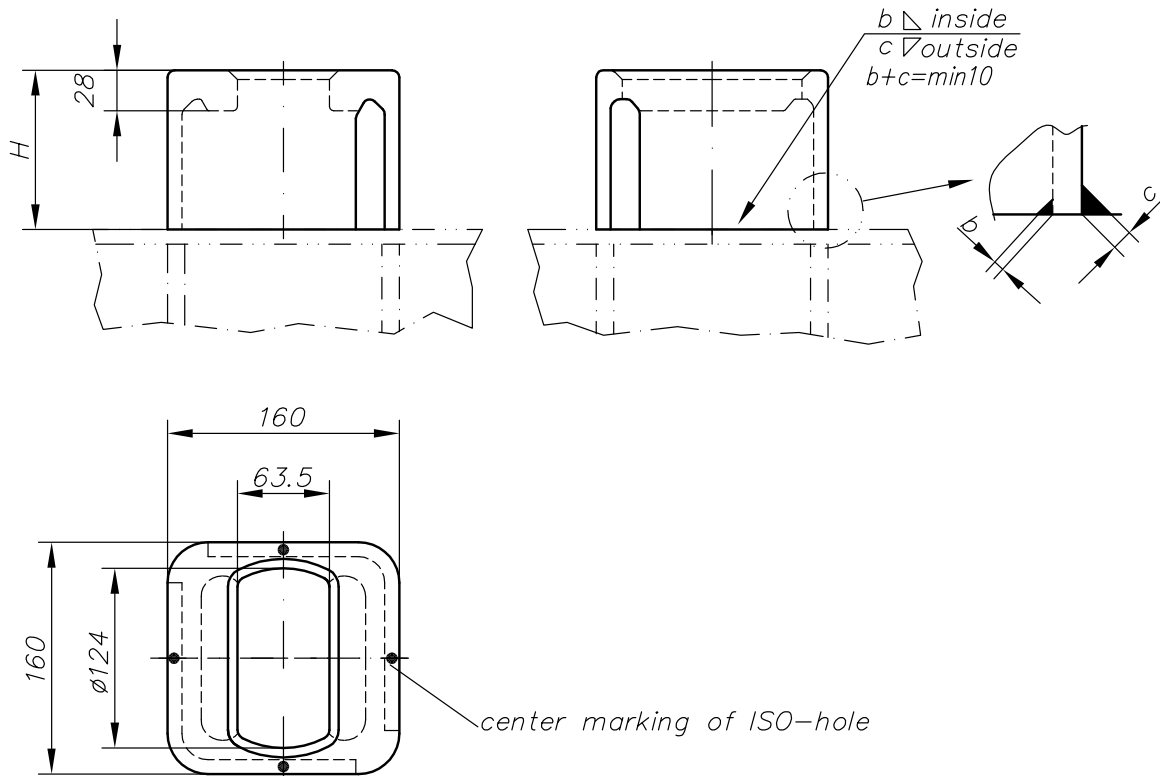


Copying of this document and giving it to others and the use or communication of contents thereof, are forbidden without express authority. Offenders are liable to the payment of damage. All rights are reserved in the event of the grant of patent or registration of the utility model or design. Modifications of design are reserved.



**Welding:**

Preferable low hydrogen-electrodes (lime basic electrodes); e.g. AWS/ASME SFA-5.1 E7016 or E7028

1	TF-11	110		1305.1101.01	7,1	1003846
No.	Type	H		Code No.	Weight	SAP

Class Approval: acc. to order confirmation  
 Nom. Breaking Load: Tension 500kN  
                                   Shear 420kN  
 Material: structural steel  
                   S355J2G3 or equivalent  
 Finish: acc. to order confirmation

Weight: acc. to table  
 Index:  
 Drawn by: JWJ  
 Date: 24.07.01  
 Dwg. No.: R1300.5100  
 File No.: R13005100