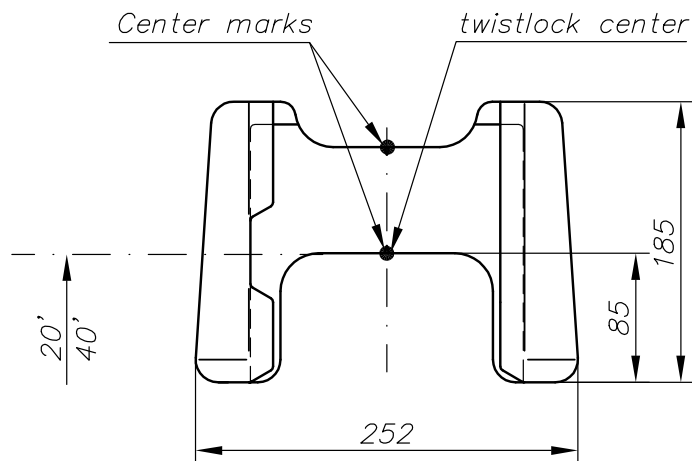
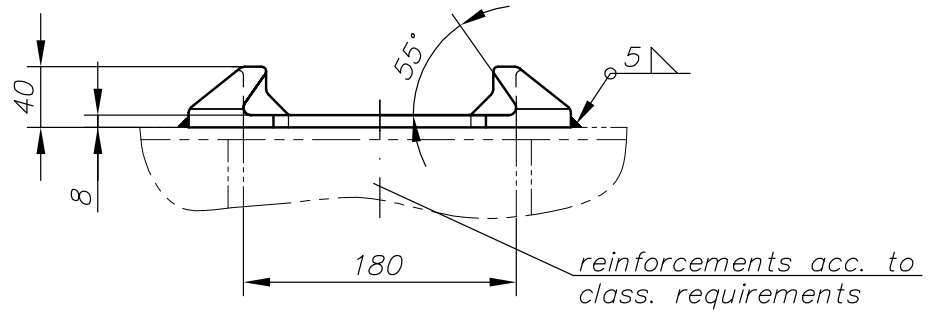


Copying of this document and giving it to others and the use or communication of contents thereof, are forbidden without express authority. Offenders are liable to the payment of damage. All rights are reserved in the event of the grant of patent or registration of the utility model or design. Modifications of design are reserved.



Welding:

Preferable low hydrogen-electrodes (lime basic electrodes); e.g. AWS/ASME SFA-5.1 E7016 or E7028.

Class approval: acc. to order confirmation  
 Nom. breaking load: Tension: 500 kN  
                                   Shear: 420 kN  
 Material: cast steel  
 Finish: acc. to order confirmation

Weight: ~ 4,5 Kg  
 Index:  
 Drawn by: JGR  
 Date: 22.10.02  
 Dwg. No.: R1800.2101  
 File No.: R18002101