

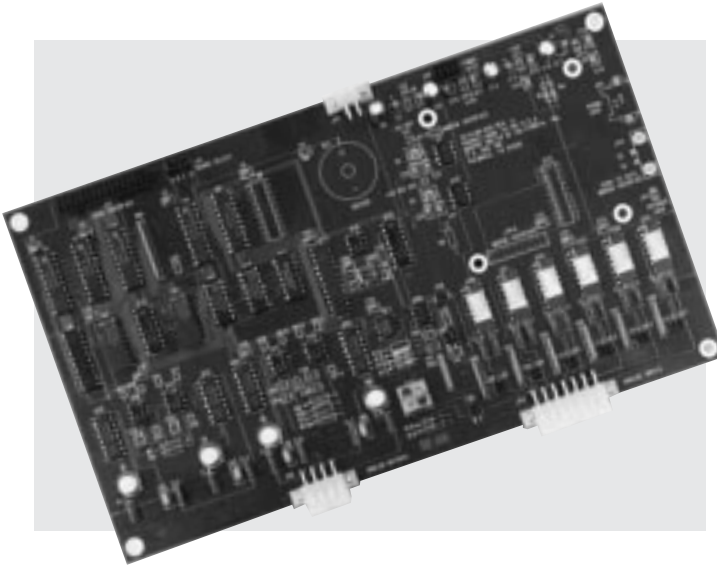
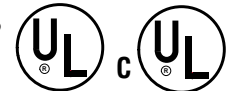
SELECTRONIC® Micro-Controller Accessory Board

MS5-9007A
Revised 05-03
Catalog Section 40
(00-02-0093)

FWMurphy

Series 510

- Accessory Boards for the SELECTRONIC® Series 500 Micro-Controller
- Provides Additional Analog Input and Output Capabilities
- Microprocessor Based Logic Control Platform
- Easily Adaptable to a Variety of Equipment
- Approved for Class I, Division 2, Groups C & D, Hazardous Areas



Description

The 510 Accessory Board is offered as an option for expanding the capabilities of the Series 500 Micro-controller.

The 510 expansion boards will increase the analog input and output capability of the Series 500 controller.

Using the 510 accessory boards (two boards) can provide up to the following analog increase to the Series 500 controller:

- Twelve (12) 12-bit, 4-20 mA Analog Inputs
- Four (4) 12-bit, 0-5 VDC Analog Inputs
- Four (4) 8-bit, 4-20 mA Analog Outputs
- Four (4) 12-bit, 4-20 mA Analog Outputs

The Series 500 controller and the 510 accessory boards are microprocessor base logic control platforms. They are designed to meet the combination of control and monitoring needs associated with engine or electric motor driven equipment environments.

All Murphy Micro-controllers are user-friendly, multi-functional and easy-to-adapt to a wide variety of existing equipment.

Warranty

A two-year warranty on materials and workmanship is given with this FWMurphy product. A copy of the warranty may be viewed or printed by going to www.fwmurphy.com/warranty.asp.

Specifications

Analog Inputs:

Six (6) 12-bit, external 4-20 mA analog;
Two (2) 12-bit external 0-5 VDC or optional end-of-line 4-20 mA.

Analog Outputs:

Two (2) 8-bit 4-20 mA;
Two(2) 12-bit 4-20 mA.

User Set Point Adjustments:

Set through Series 500 board.

Power Supply Requirements:

-5 VDC @ 150 mA, for one (1) 510 board.

Laboratory Approvals: UL and CUL approved for Class I, Division 2, Groups C & D Hazardous Locations.