

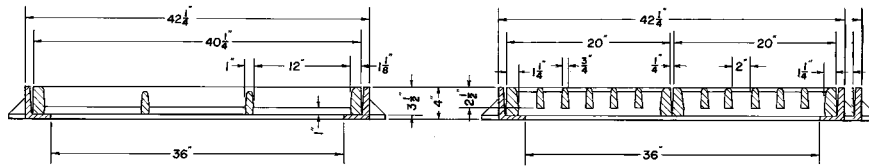


## R-3807 Median Drain Frame and 2 pc. Grate Assembly

### Heavy Duty

For flush type inlet box in locations where median narrows. Recommended installation, with load bearing bars parallel to roadway.

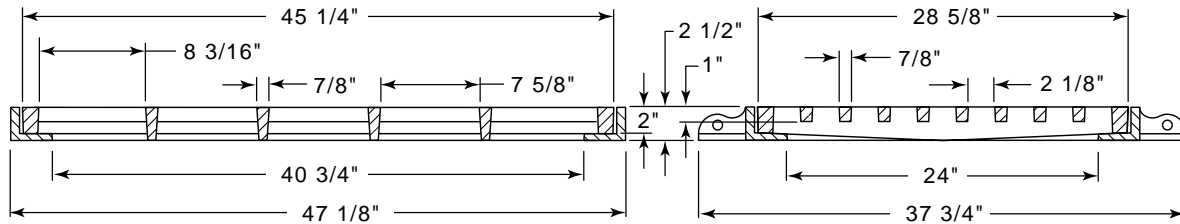
Not recommended for bicycle traffic.



## R-3808-1 Single Unit Median Drain Frame and Grate Assembly

### Heavy Duty

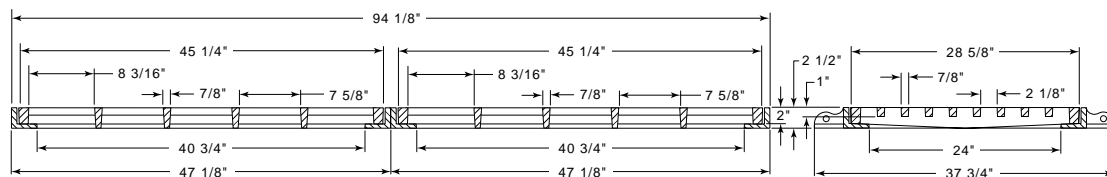
Not recommended for bicycle traffic.



## R-3808-2 Double Unit Assembly

### Heavy Duty

Center ditch inlet for grade slopes of 8:1 to 4:1.



Illustrating R-3808-2 Double Unit Assembly

# BRIDGE, DECK AND BUILDING DRAINS

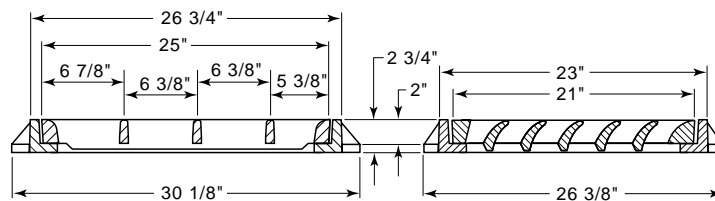


## R-3900-B Bridge Approach Drain Frame and Grate (Single)

### Heavy Duty

Grate is furnished in Ductile Iron grade 100-70-03.

See **R-3900-D** for photo.

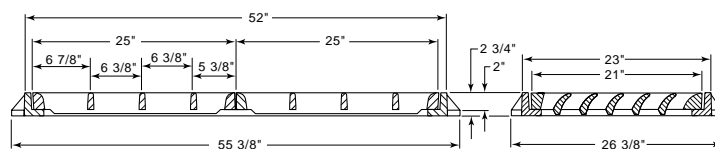


## R-3900-C Bridge Approach Drain Frame and Grate (Double Unit)

### Heavy Duty

Grates are furnished in Ductile Iron grade 100-70-03.

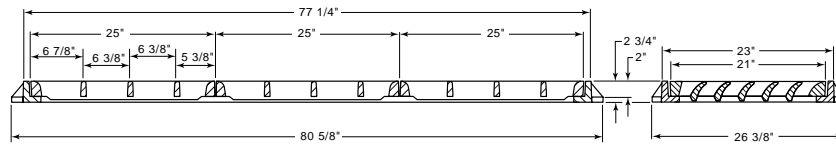
See **R-3900-D** for photo.



## R-3900-D Bridge Approach Drain Frame and Grate (Triple Unit)

### Heavy Duty

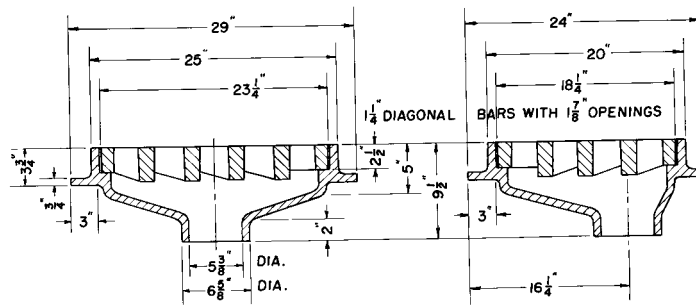
Grates are furnished in Ductile Iron grade 100-70-03.



## R-3919 Bridge Drain Frame and Grate

### Heavy Duty

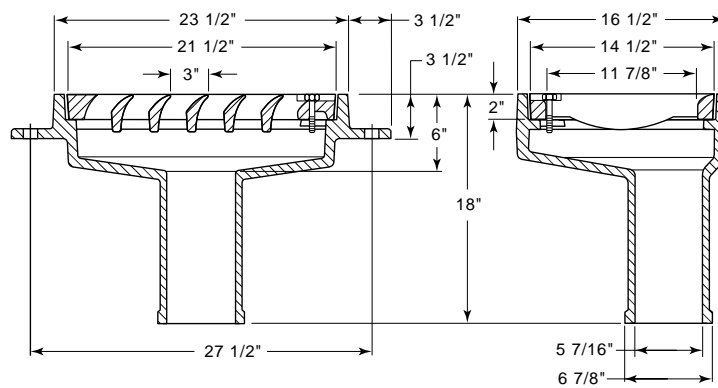
Not recommended for bicycle traffic.



## R-3920-V Bridge Drain Frame and Grate

### Heavy Duty

Type V grate (shown) is considered bicycle safe only when installed with vanes perpendicular to the curb.



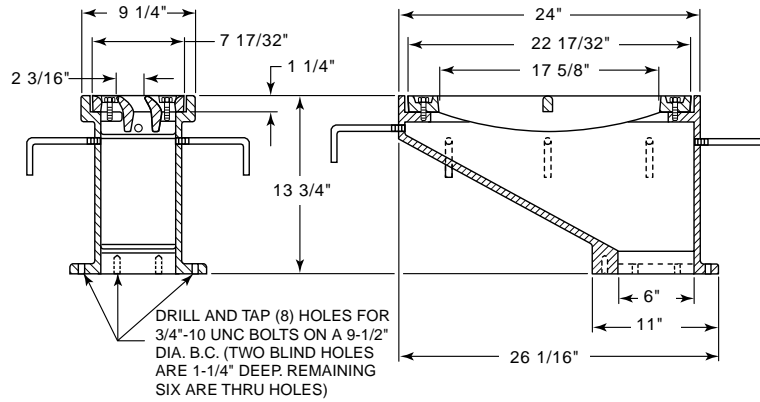
## R-3921-V1 Bridge Drain Frame and Bolted Grate

### Heavy Duty

Available with Type "L" grates (order as **R-3921-L1**) or Type "B" grate shown on **R-4014-T2**.

Type V grate (shown) is considered bicycle safe only when installed with vanes perpendicular to the curb.

Standard 125# flanged template downspout furnished by others.

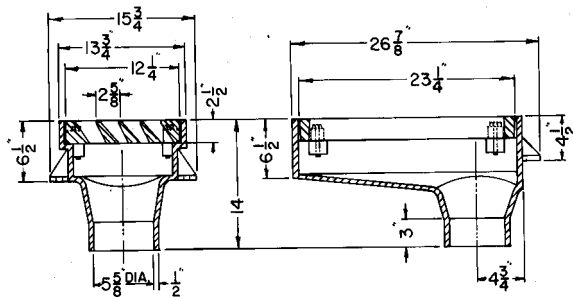


---

## R-3922 Bridge Drain Frame and Bolted Grate

### Heavy Duty

Type "V" ductile iron grate (shown) is considered bicycle safe only when installed with vanes perpendicular to the curb.



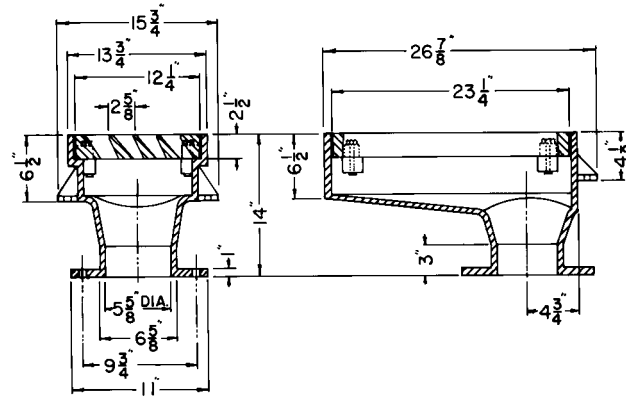
## R-3922-A

### Heavy Duty

Same as R-3922 except with bolting flange.

Downspout furnished by others.

Type "V" ductile iron grate (shown) is considered bicycle safe only when installed with vanes perpendicular to the curb.

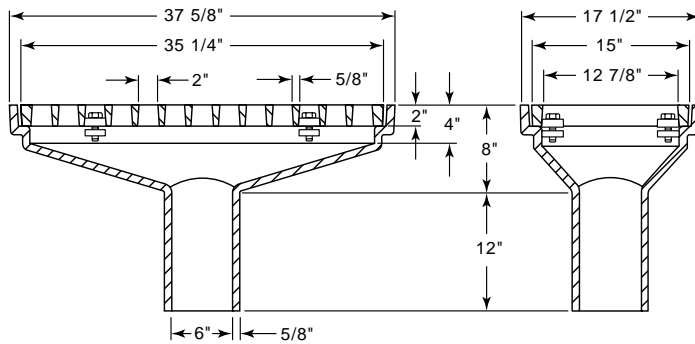


---

## R-3924 Bridge Drain Frame and Bolted Grate

### Heavy Duty

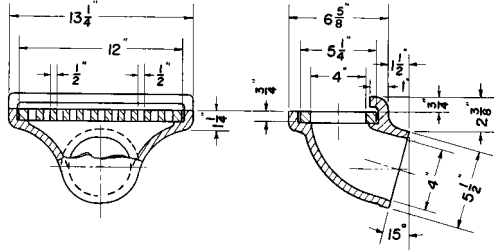
Considered bicycle safe only when installed with slots perpendicular to the curb.



## R-3928 Bridge Drain Frame and Grate

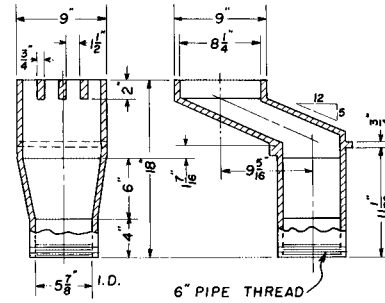
### Heavy Duty

Rear angled outlet permits placement of drain pipe to avoid obstructing girders.



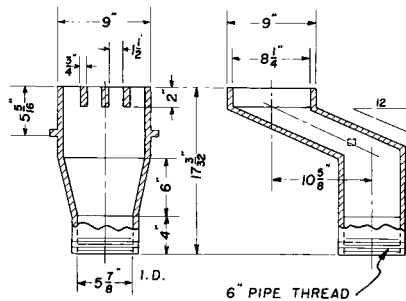
## R-3930 Offset Bridge Scupper with 6" Threaded Outlet

### Heavy Duty



## R-3931 Offset Bridge Scupper with 6" Threaded Outlet

### Heavy Duty

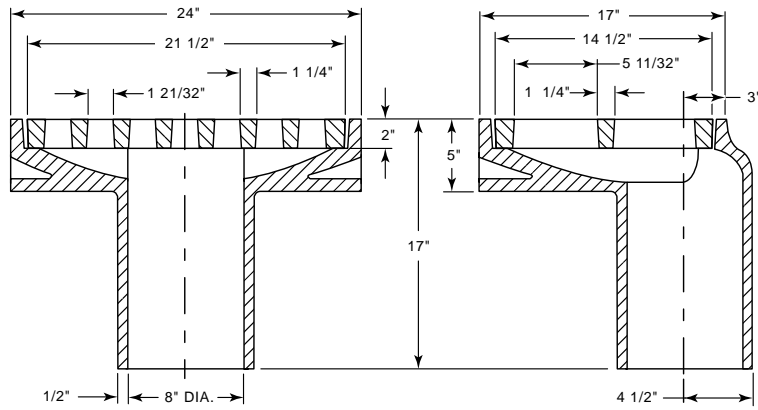


Illustrating R-3931



# R-3940 Offset Roadway Scupper with 8" Outlet

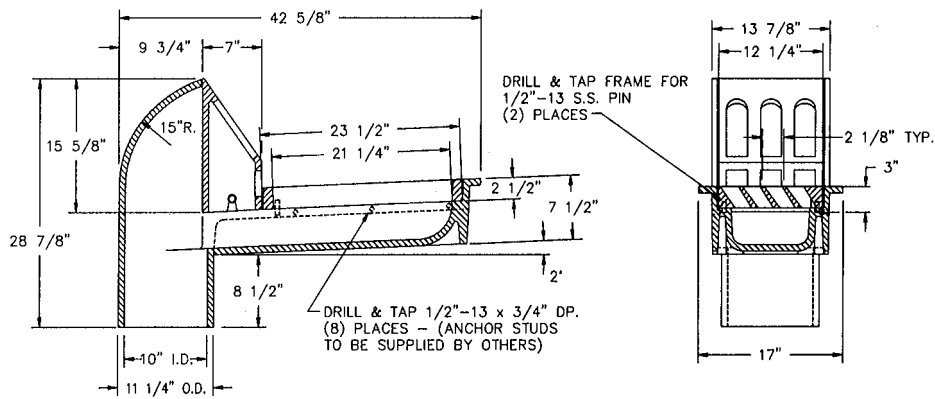
Heavy Duty



# R-3942 Bridge Scupper with 10" Outlet

Heavy Duty

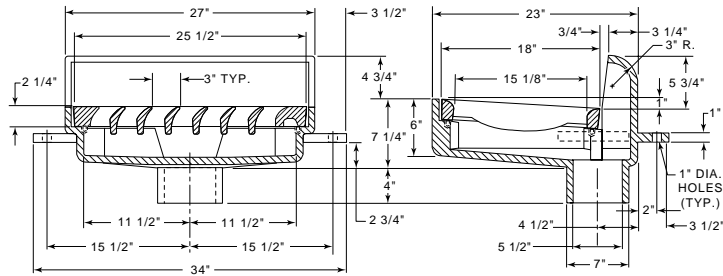
Grate in ductile iron.





# R-3948-V Bridge Scupper with 5 1/2" Outlet, Bolted Grate

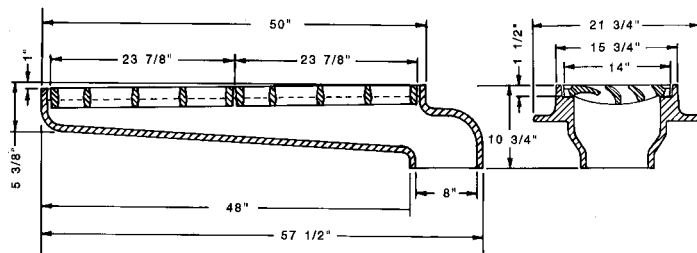
Heavy Duty



---

# R-3951 Bridge Scupper with 8" Outlet, Bolted Grates

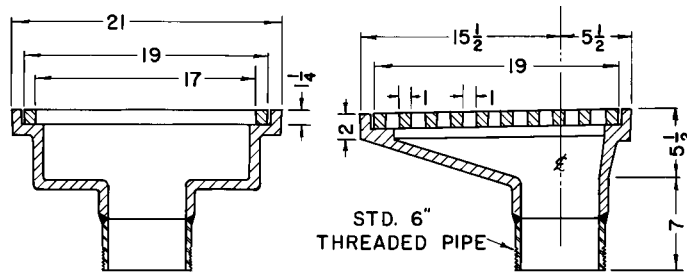
Heavy Duty



## R-3952 Bridge Scupper with 6" Threaded Outlet

### Heavy Duty

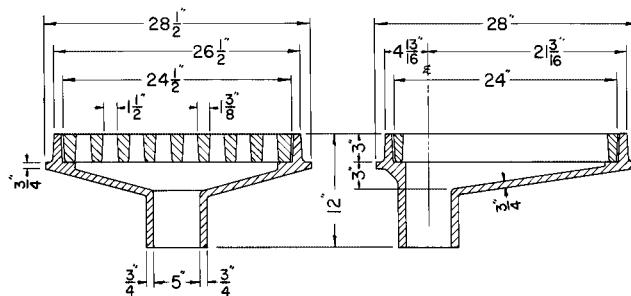
Not recommended for bicycle traffic.



## R-3954 Bridge Scupper

### Heavy Duty

Not recommended for bicycle traffic.

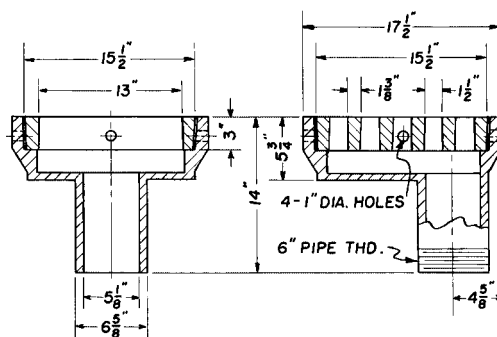


## R-3961 Bridge Drain with Threaded Outlet

### Heavy Duty

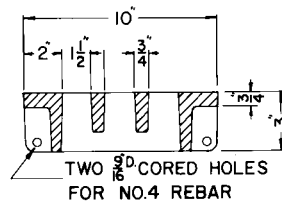
Note weep holes on each side of frame.

Not recommended for bicycle traffic.



## R-3976 Bridge Drain Grate

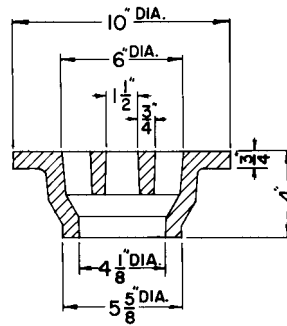
Heavy Duty



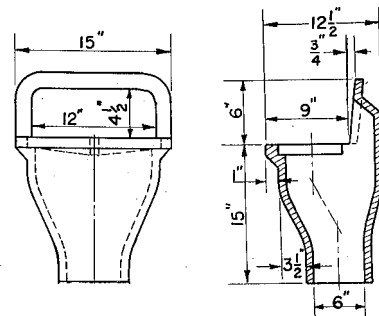
## R-3977 Bridge Drain Grate

Heavy Duty

Cored for #4 Rebar Anchors.



## R-4001-B Bridge Drain Heavy Duty



GRATE SIZE  $8\frac{1}{8}$ " x  $13\frac{15}{16}$ " x 1"

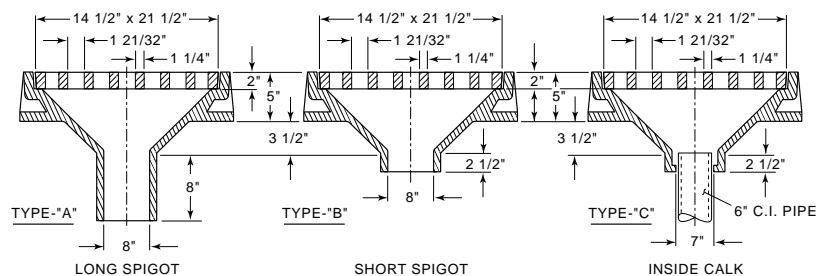


## R-4003 Type A, B, & C Roadway Drains Heavy Duty

Particularly suited for use on elevated highways. Sloping basin provides self-cleaning and eliminates clogging.

Specify:

1. Catalog number, and Type A, B or C.



# R-4004 Series Scupper Frames and Grates

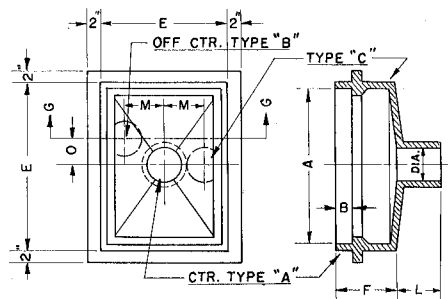
## Heavy Duty

Spigot variations adapted to facilitate placement on overhead or bridge superstructures.

Dimensions in Inches									
Catalog No.	A	B	E	F	L	Dia.	O	M	Type
R-4004-A	17 1/4 x 23 3/4	2	19 1/2 x 26	6 3/4	5 1/4	8	—	—	A
R-4004-B	20 3/8 x 23 3/4	2	22 5/8 x 26	6 3/4	5 1/4	8	5	6 5/16	B
R-4004-C	20 3/8 x 23 3/4	2	22 5/8 x 26	6 3/4	5 1/4	8	—	6 5/16	C
R-4004-G1§	22 x 22	1 3/4	24 1/4 x 24 1/4	7	3 3/4	8*	—	5	C

\*Inside caulk.

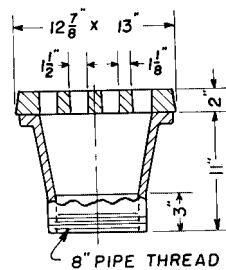
§Not recommended for bicycle traffic.



Type B

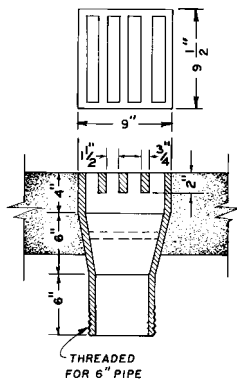
## R-4005-A2

Furnished standard with 8" threaded outlet.



## R-4006

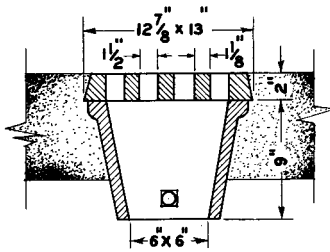
Integral-cast bars. Outlet threaded for 6" pipe.



---

## R-4007

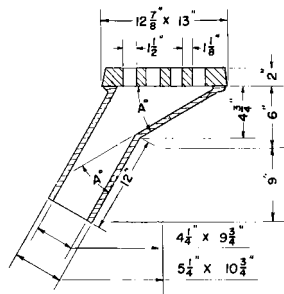
Note bolt for fastening to square trough extension.



---

## R-4007-A6

A = 30°



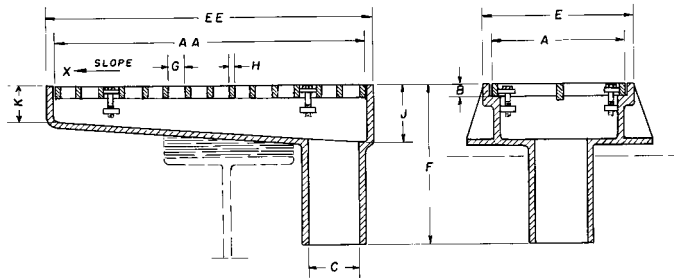
# R-4014 Series Overhead Scupper Drains with Bolted Grates

## Heavy Duty

Side bolting flanges are designed for fastening to superstructure. Variation in elevation is accomplished by use of shims or adjusting bolts.

Dimensions in Inches												
Catalog No.	A	AA	B	C	E	EE	F	G	H	J	K	Slope Per Ft.
R-4014-B1*	15	43 1/8	1 1/2	6	17 1/2	45 1/8	9 1/4	2 x 6 1/2	5/8	6 1/2	4	X = 3/16"
R-4014-C1	15	35 5/8	1 1/2	6	17 1/2	37 5/8	11	1 7/8 x 6 1/2	5/8	6 1/2	4	X = 9/16"

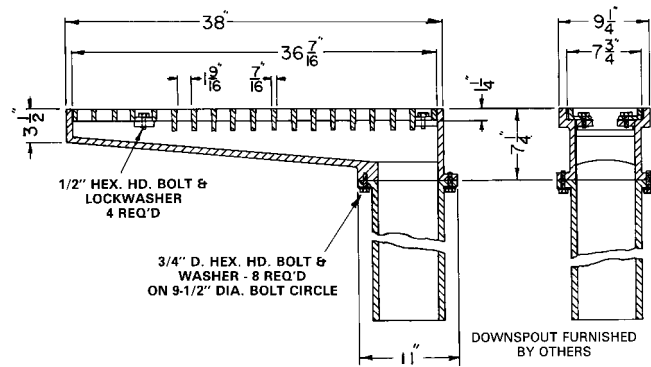
\*Also available with Type "C" grate.



## R-4014-T Overhead Scupper with Bolted Grate

### Heavy Duty

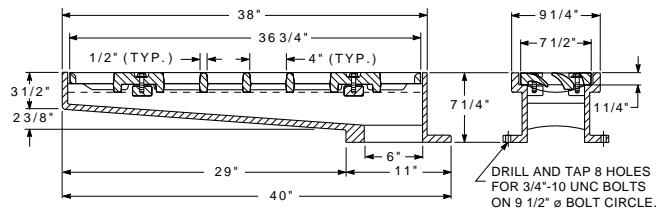
Standard 125 # flanged template downspout furnished by others.



## R-4014-TL Overhead Scupper with Bolted Grate

### Heavy Duty

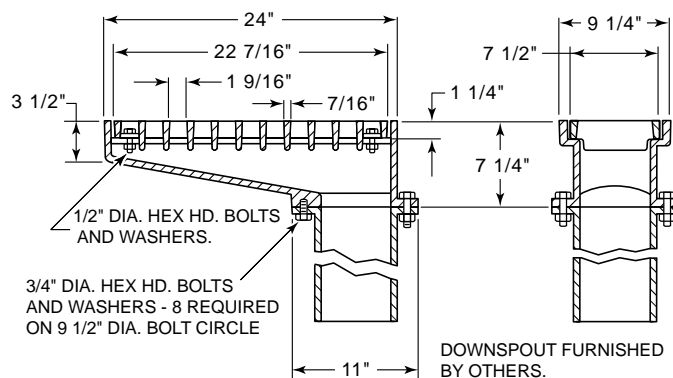
Downspout furnished by others.



## R-4014-T2 Overhead Scupper with Bolted Grate

### Heavy Duty

Standard 125 # flanged template downspout furnished by others.



Available with type L grate, order as **R-4014-TL2**. Also available with Type V grate shown on **R-3921-V1**. Type V grate is considered bicycle safe only when installed with vanes perpendicular to the curb.



# R-4015-6 Series Roadway and Deck Drains

## Heavy Duty

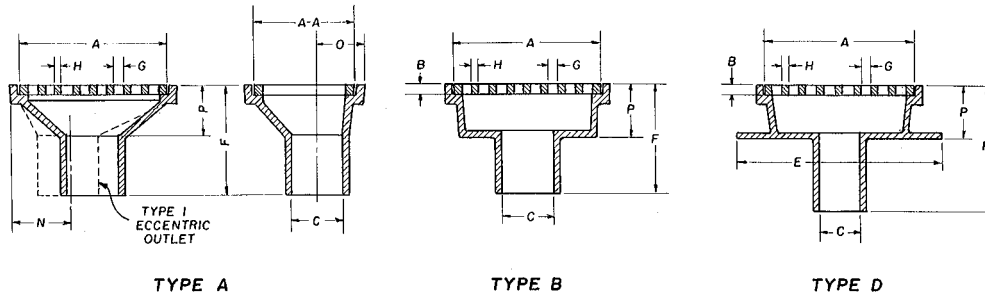
For use on decks of elevated parking garages, access ramps, roadways, and viaducts.

Dimensions in Inches											
Catalog No.	A	AA	B	C	E	F	G	H	O	P	Type
R-4015-A	11	9	1	4	—	12 1/2	1 x 7	1	3 5/8	5 1/2	A
R-4015-A1	11	9	1	4	—	16 1/2	1 x 7	1	3 5/8	5 1/2	A***
R-4015-B	11	9	1	4	—	12 1/2	1 1/2 x 4	1 1/8	3 5/8	5 1/2	A
R-4015-C	11	9	1	5	—	10 5/8	1 x 7	1	—	5 5/8	B
R-4015-D	11	9	1	5	16 1/2 x 18 1/2	14	1 x 7	1	—	6 1/8	D
R-4016-B	17	12	1 1/4	6	—	12 1/2	1 1/8 x 4 1/4	1 1/8	5 3/8	6	A
R-4016-H1	13	19	1 1/4	6	—	12 1/2	1 x 5 3/16	1	5 3/8	5 1/2	1**
R-4016-K	19	19	1 1/4	6	—	12 1/2	1 x 17	1	5 3/8	5 1/2	A§

§Not recommended for bicycle traffic. 2" adjusting ring available - see page 85. Also available as Type D frame with weep holes.

\*\*Type 1 eccentric outlet furnished only on Catalog Number R-4016-H1. N = 5 3/8.

\*\*\*Outlet adapted for 6" inside pipe tap.



Illustrating R-4015-A



Illustrating R-4015-C



Illustrating R-4015-D

