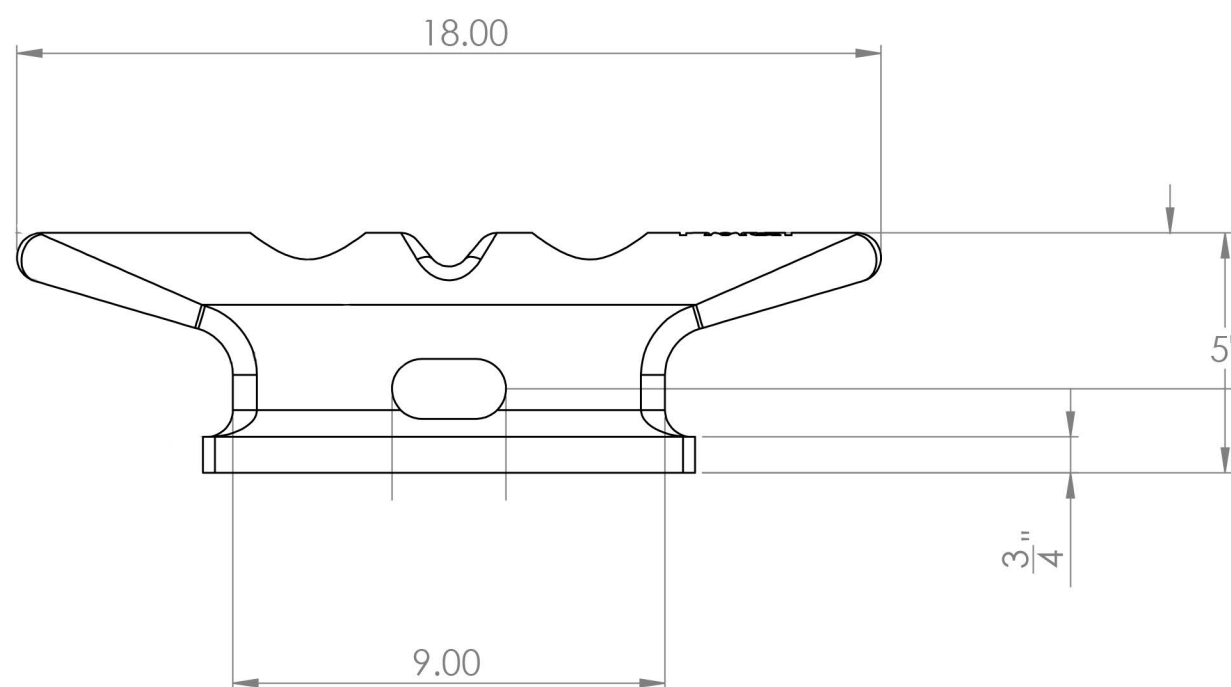
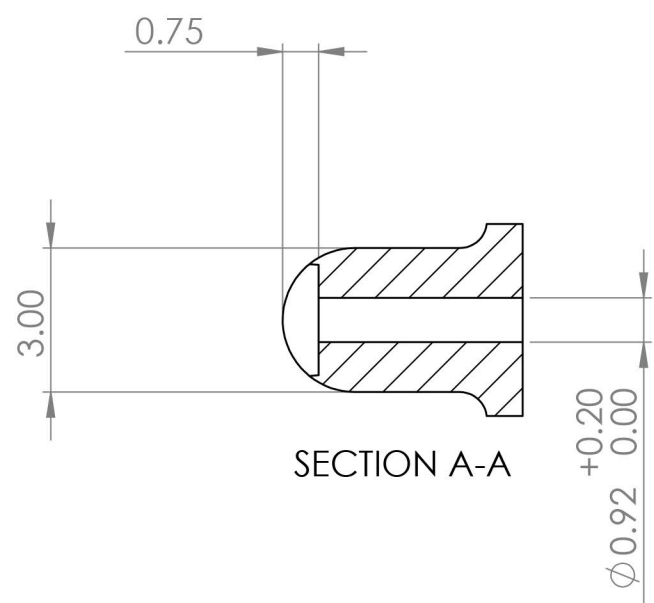
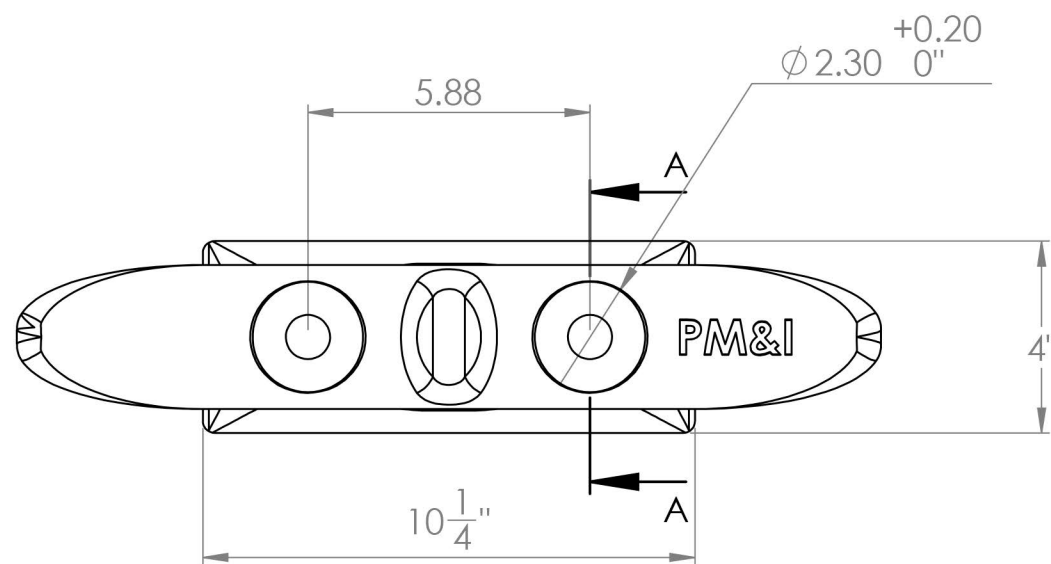


4

3


2

1



Note 1: Product designed for 7/8 inch heavy hex head bolts using 1 7/16 heavy hex head socket

**PROPRIETARY AND CONFIDENTIAL**  
 This document is confidential and contains trade secrets of Pacific Marine & Industrial (PM&I). It is NOT to be copied in whole or in part or distributed without express written permission from PM&I.

UNLESS OTHERWISE SPECIFIED:		NAME	DATE
DIMENSIONS ARE IN INCHES		DRAWN	
TOLERANCES:		CHECKED	
FRACTIONAL ± 1/16"		ENG APPR.	
ANGULAR: MACH ±		MFG APPR.	
BEND ±		Q.A.	
TWO PLACE DECIMAL ±0.01			
THREE PLACE DECIMAL ±0.005			
INTERPRET GEOMETRIC TOLERANCING PER:			
MATERIAL			
FINISH			
DO NOT SCALE DRAWING			

<b>Pacific Marine &amp; Industrial</b>		
555 South 12th Street Richmond, CA, USA 94804		
TITLE:		
PC2-18 Cleat		
SIZE	DWG. NO.	REV
<b>B</b>		
SCALE: 1:4	WEIGHT:	SHEET 1 OF 1

4

3

2

1

B

B

A

A